

Technical data sheet

Product features



Freezing cabinet 700 l LED light, Icecream version GN 2/1, stainless steel

Model	SAP Code	00012371
--------------	-----------------	----------



- GN / EN size in device: GN 2/1
- Chamber volume [l]: 458
- Minimum device temperature [°C]: -24
- Maximum device temperature [°C]: -10
- Insulation thickness [mm]: 90
- Control type: Digital
- Interior lighting: Yes
- Door lock: Yes
- Automatic defrost: Yes
- HACCP: Yes
- Annual energy consumption [kWh]: 2436

SAP Code	00012371	Gross Volume [m3]	1.445
Net Width [mm]	847	Net Volume [m3]	1.298
Net Depth [mm]	733	Number of GN / EN	24
Net Height [mm]	2090	GN / EN size in device	GN 2/1
Net Weight [kg]	131.00	Minimum device temperature [°C]	-24
Power electric [kW]	0.526	Maximum device temperature [°C]	-10
Loading	230 V / 1N - 50 Hz	Refrigerant	R290
Chamber volume [l]	458		

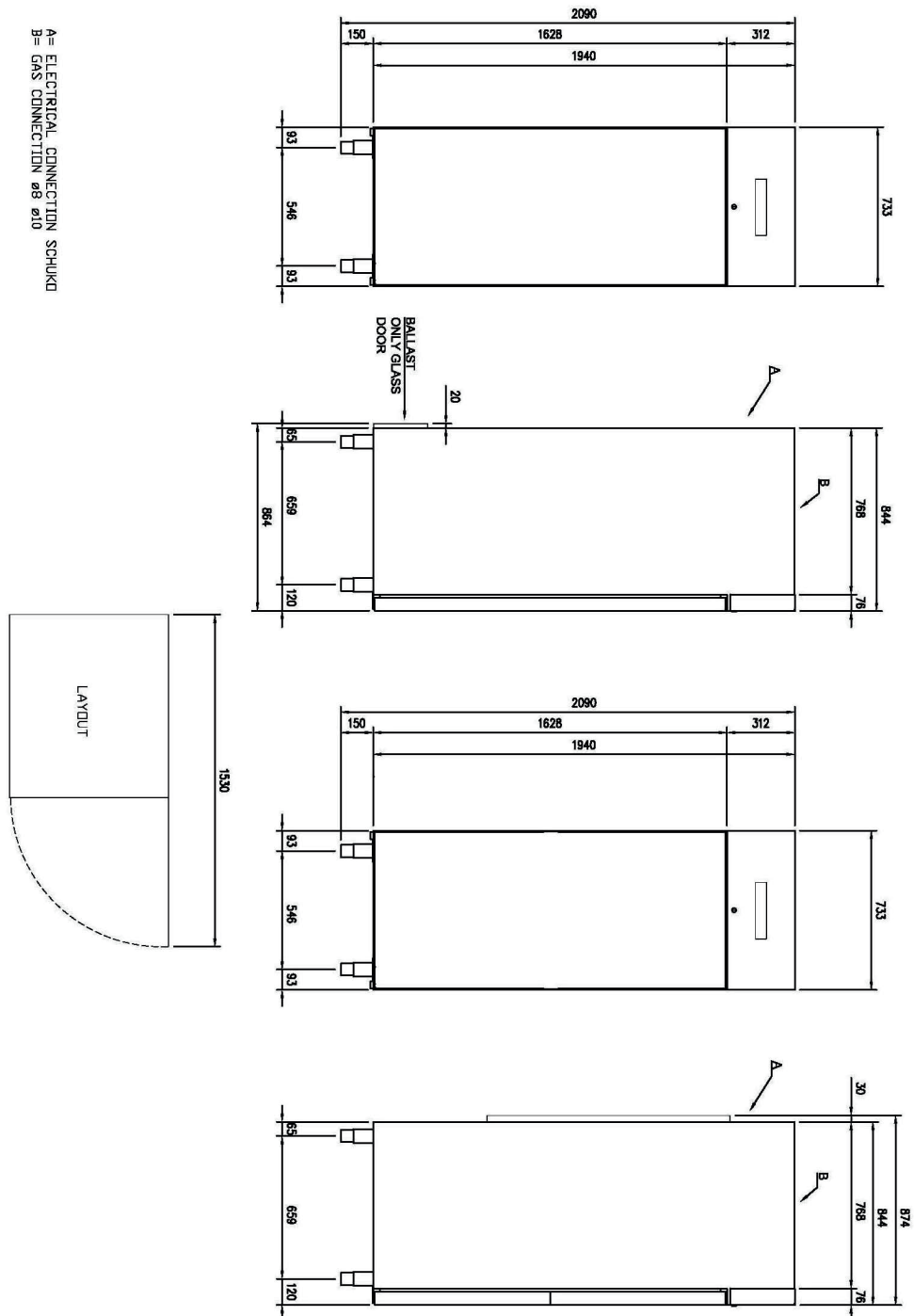
Technical data sheet

Technical drawing



Freezing cabinet 700 l LED light, Icecream version GN 2/1, stainless steel

Model	SAP Code	00012371
--------------	-----------------	----------



Technical data sheet

Product benefits



Freezing cabinet 700 l LED light, Icecream version GN 2/1, stainless steel

Model

SAP Code

00012371

1

Insulation 90mm

minimal losses
– energy saving

2

Two-sided opening

location variability
– greater operational efficiency
– better kitchen ergonomics

3

All-stainless design

corrosion resistance
– longer service life
– health safety

4

Automatic defrosting

nothing needs to be watched
– always working properly without extra operator requirements

5

Wheels, legs

variability
– user comfort

6

High energy class

minimal energy loss
high efficiency
guaranteed chilled food
– cost saving
– hygienic safety

Technical data sheet

Technical parameters



Freezing cabinet 700 l LED light, Icecream version GN 2/1, stainless steel

Model

SAP Code

00012371

1. SAP Code:

00012371

2. Net Width [mm]:

847

3. Net Depth [mm]:

733

4. Net Height [mm]:

2090

5. Net Weight [kg]:

131.00

6. Gross Width [mm]:

763

7. Gross depth [mm]:

873

8. Gross Height [mm]:

2170

9. Gross Weight [kg]:

143.97

10. Device type:

Electric unit

11. Power electric [kW]:

0.526

12. Loading:

230 V / 1N - 50 Hz

13. Refrigerant:

R290

14. Material:

AISI 304

15. Exterior color of the device:

Stainless steel

16. Max ambient temperature [°C]:

40

17. Device properties 2:

Ice cream

18. GN / EN size in device:

GN 2/1

19. Number of GN / EN:

24

20. Chamber volume [l]:

458

21. Gross Volume [m3]:

1.445

22. Net Volume [m3]:

1.298

23. Adjustable feet:

Yes

24. Insulation thickness [mm]:

90

25. Number of doors:

1

26. Unit:

Yes

27. Control type:

Digital

28. Door lock:

Yes

Technical data sheet

Technical parameters



Freezing cabinet 700 l LED light, Icecream version GN 2/1, stainless steel

Model

SAP Code

00012371

29. Interior lighting:

Yes

33. Maximum device temperature [°C]:

-10

30. HACCP:

Yes

34. Automatic defrost:

Yes

31. Annual energy consumption [kWh]:

2436

35. Number of grids:

7

32. Minimum device temperature [°C]:

-24

36. Cross-section of conductors CU [mm²]:

0,5

- Výkon (kW): 2,4-3,3 (230 V)